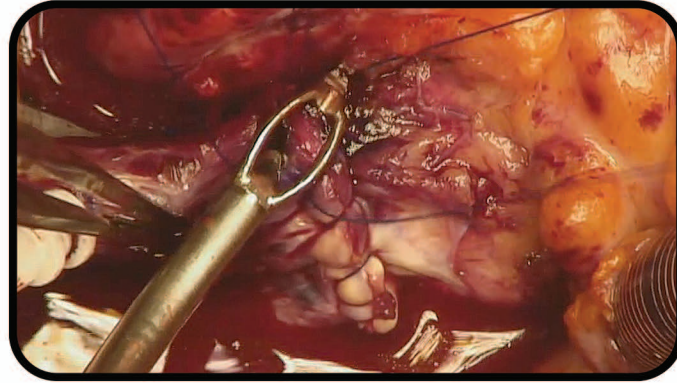
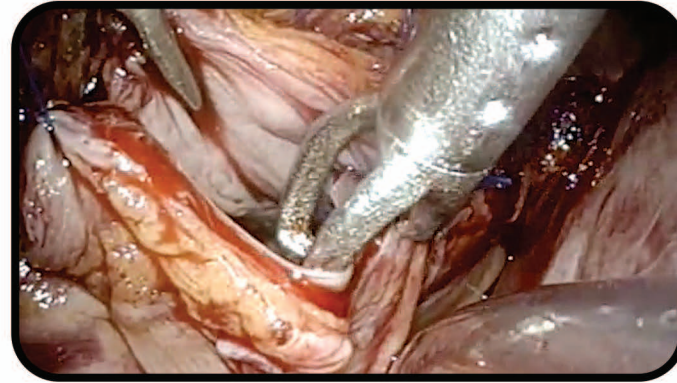


EXAMPLES OF C1™ SUTURING APPLICATIONS



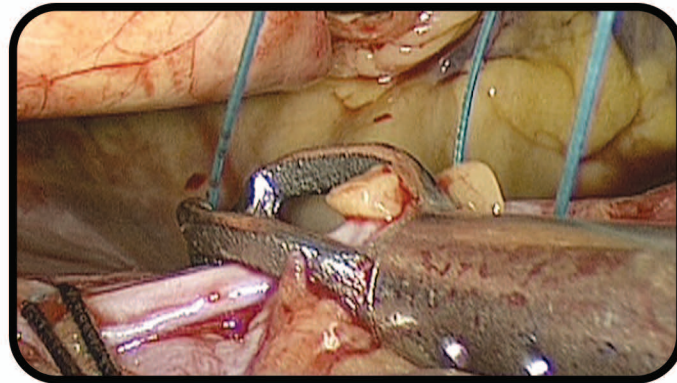
AORTOTOMY CLOSURE

Single layer running suture in an open AVR.



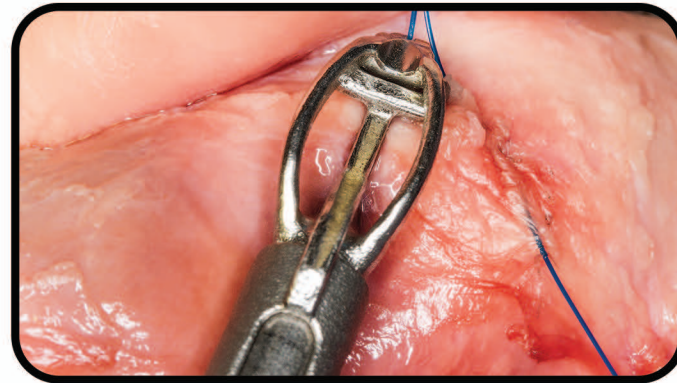
LEFT ATRIOTOMY CLOSURE

Left atrial suturing in a minimally invasive MV repair.



STAY SUTURE PLACEMENT

Pericardial traction suturing.








PURSE STRING SUTURE PLACEMENT

Depth Limiter accessory aids in purse string suturing of aorta.

C1™ PRODUCT ORDERING

SUPPLIED: STERILE

	REORDER	PRODUCT	DESCRIPTION
 x 6	REF 022000	C1™ SUTURING DEVICE	Box of 6 Devices
 x 1	REF 022012	C1™ DEPTH LIMITER	Box of 1 Device (Non-Sterile)
 x 12	REF 021860	COR-SUTURE™ QUICK LOAD® 3-0 Polypropylene, Non-Absorbable, 53"	Box of 12 Sutures (1 Suture per Pouch)
 x 12	REF 021861	COR-SUTURE™ QUICK LOAD® 2-0 Polyester White, Non-Absorbable, 38"	Box of 12 Sutures (1 Suture per Pouch)
 x 12	REF 021862	COR-SUTURE™ QUICK LOAD® 2-0 Polyester Green, Non-Absorbable, 38"	Box of 12 Sutures (1 Suture per Pouch)

FN022014B 02.03.16



C1™ DEVICE
Remote Suturing System

**Precise remote suture placement
featuring enhanced visualization
and no exposed needles.**



LSI SOLUTIONS®

7796 VICTOR-MENDON RD | VICTOR, NY 14564 USA | CUSTOMER SERVICE: 866.575.3493 | TECH SUPPORT: 866.428.9092 | FAX: 585.742.8086 | WWW.LSISOLUTIONS.COM

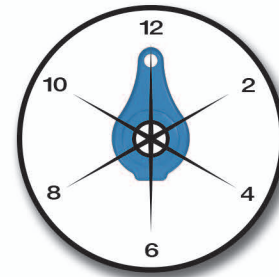
The LSI logo, LSI SOLUTIONS, C1, C1 Depth Limiter, Cor-Suture, and Quick Load are registered trademarks or trademarks of LSI SOLUTIONS, Inc. Copyright © 2015, LSI SOLUTIONS®. All Rights Reserved.

LSI SOLUTIONS®

C1™ DEVICE

Designed for remote suture delivery in minimally invasive surgery.

Surgeon's perspective



ROTATING KNOB

Six device tip positions.

ERGONOMIC HANDLE

Right or left hand comfort.

ANGLED SHAFT

Optimized for remote suture delivery.

VIEWING WINDOW

Unobstructed tissue visualization.

LEVER

Single squeeze suture placement.

NEEDLE RETRACTED IN SAFETY SHEATH

Protects against exposed sharps.

SUTURE

3-0 Polypropylene and 2-0 Polyester.

