

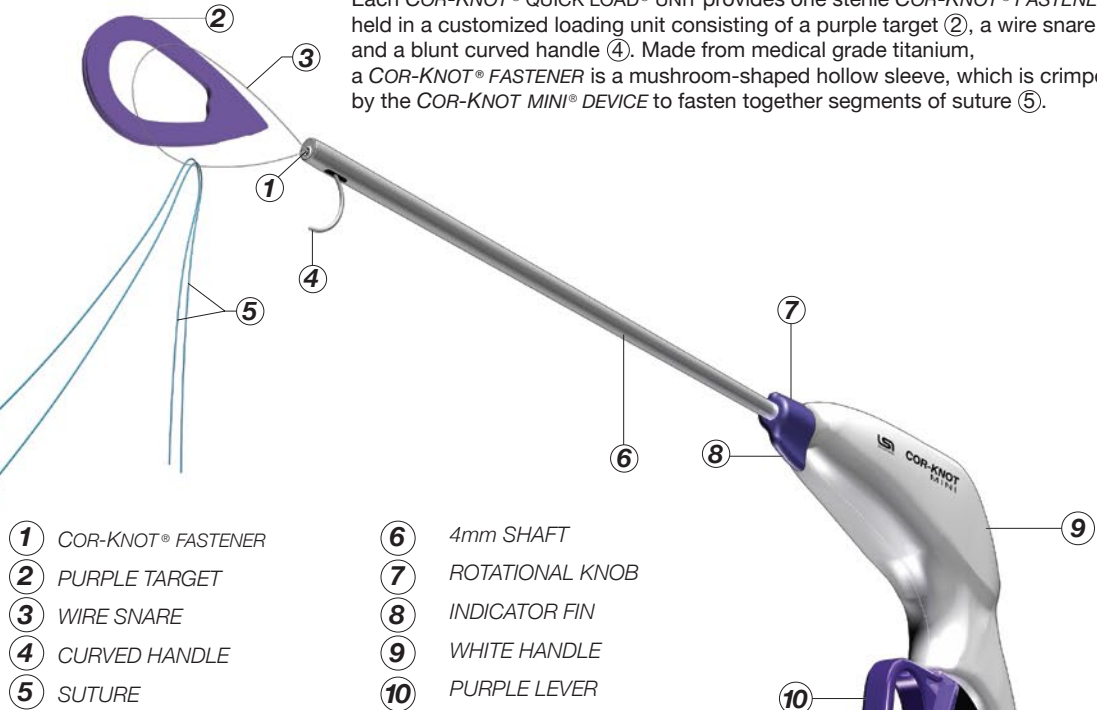
COR-KNOT MINI® EU TECHNOLOGY GUIDE

 READ PRODUCT INSERT THOROUGHLY BEFORE USE

FIG. 1

COR-KNOT® QUICK LOAD® UNIT DESCRIPTION

Each COR-KNOT® QUICK LOAD® UNIT provides one sterile COR-KNOT® FASTENER ① held in a customized loading unit consisting of a purple target ②, a wire snare ③, and a blunt curved handle ④. Made from medical grade titanium, a COR-KNOT® FASTENER is a mushroom-shaped hollow sleeve, which is crimped by the COR-KNOT MINI® DEVICE to fasten together segments of suture ⑤.



- ① COR-KNOT® FASTENER
- ② PURPLE TARGET
- ③ WIRE SNARE
- ④ CURVED HANDLE
- ⑤ SUTURE

- ⑥ 4mm SHAFT
- ⑦ ROTATIONAL KNOB
- ⑧ INDICATOR FIN
- ⑨ WHITE HANDLE
- ⑩ PURPLE LEVER

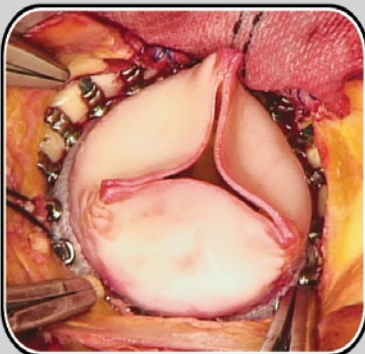
COR-KNOT MINI® DEVICE DESCRIPTION

Each sterile package (kit) contains two 17cm long SINGLE PATIENT USE COR-KNOT MINI® DEVICES and twelve COR-KNOT® QUICK LOAD® UNITS (COMBO KIT) or two COR-KNOT MINI® DEVICES only (DEVICE KIT). A COR-KNOT® FASTENER is loaded into the distal tip of the 4mm diameter shaft ⑥. A rotational knob ⑦ with an indicator fin ⑧, a white handle ⑨ and purple lever ⑩ are located at the proximal end of the device. By squeezing the purple lever, the COR-KNOT MINI® DEVICE crimps the COR-KNOT® FASTENER at the closure site and can trim away excess suture tails.

INDICATIONS

The COR-KNOT MINI® DEVICE used in conjunction with LSI SOLUTIONS® specified 2-0 polyester suture and a COR-KNOT® titanium fastener is indicated for use to fasten and trim suture in general and cardiovascular surgical applications.

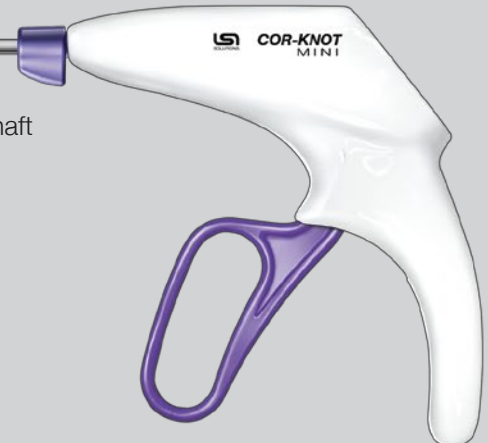
FIG. 2



Courtesy of Peter A. Knight, M.D.

Rotating Shaft

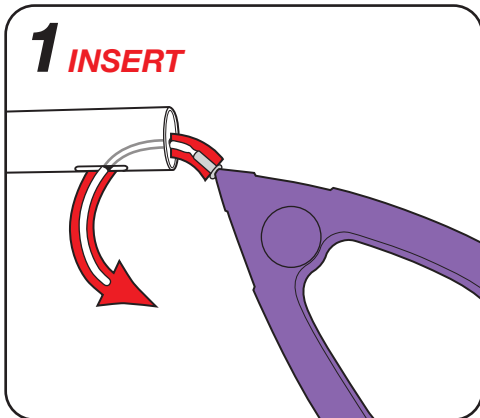
COR-KNOT MINI® DEVICE
4mm Diameter, 17cm Length Shaft



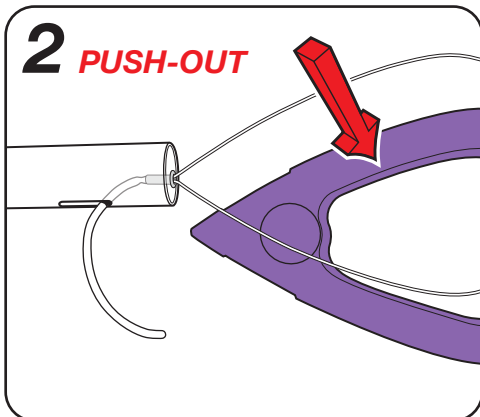
LSI SOLUTIONS®

AT SCRUB TABLE

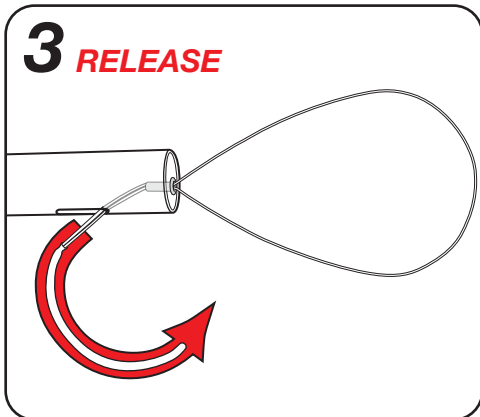
1 INSERT



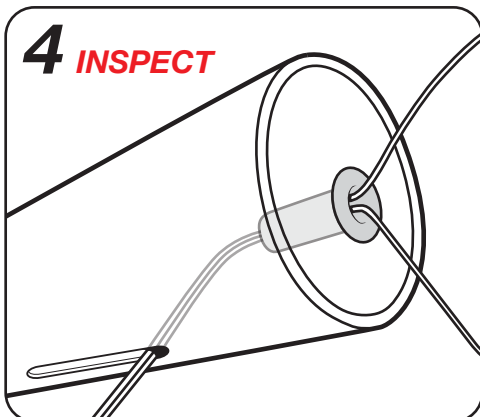
2 PUSH-OUT



3 RELEASE



4 INSPECT



LOADING WITH A COR-KNOT® QUICK LOAD® UNIT

Use proper operating room technique to pass the sterile COR-KNOT® QUICK LOAD® UNIT from its packaging. While maintaining appropriate sterile technique, follow the steps indicated in the illustrations.

1. **INSERT** the blunt tip of the curved handle into the distal slot at the end of the COR-KNOT MINI® DEVICE shaft. ROTATE the curved handle through the distal slot and out of the suture slot until the COR-KNOT® FASTENER occupies the shaft's distal slot. Fully ENGAGE the COR-KNOT® FASTENER within the tip of the COR-KNOT MINI® DEVICE by pushing on the purple target or by pulling on the curved handle.
2. **PUSH-OUT** and remove the purple target.
3. **RELEASE** the curved handle from the distal slot at the end of the COR-KNOT MINI® DEVICE shaft.
4. **INSPECT** to ensure that the COR-KNOT® FASTENER is well loaded and fully seated.

ACTIONS

When the COR-KNOT MINI® DEVICE is loaded with a COR-KNOT® FASTENER and appropriately positioned at a suture closure site, squeezing the purple lever can instantly secure and trim the suture. The surgical titanium used in a COR-KNOT® FASTENER is not absorbed by the body and is generally not associated with significant inflammatory reactions.

CONTRAINDICATIONS

- Endoscopic procedures should only be performed by physicians having adequate training and familiarity with endoscopic techniques. Medical literature should be consulted relative to techniques, complications and hazards prior to the performance of endoscopic procedures.
- The COR-KNOT® QUICK LOAD® UNIT is not intended to be used with any device other than the COR-KNOT MINI® DEVICE or the COR-KNOT® DEVICE. The COR-KNOT MINI® DEVICE is not intended to be loaded with anything other than a COR-KNOT® QUICK LOAD® UNIT.
- The COR-KNOT® FASTENER is NOT intended for placement into circulating blood unless used with compatible suture under conditions judged by the surgeon to be clinically appropriate.
- Use only with LSI SOLUTIONS® specified 2-0 polyester suture.
- Each COR-KNOT MINI® DEVICE is not intended to be fired more than 12 times.

WARNINGS

- Users should be familiar with standard procedures and techniques involving surgical suture and titanium usage before employing the COR-KNOT MINI® DEVICE with a COR-KNOT® QUICK LOAD® UNIT for fastening and trimming suture.
- Adequate COR-KNOT® FASTENER security requires reasonable clinical judgment and appropriate surgical techniques as warranted by surgical circumstances and the experience of the surgeon.
- When securing suture with a COR-KNOT MINI® DEVICE, ensure any ferrules or needles are removed from the suture ends to be loaded prior to loading the suture through the COR-KNOT MINI® DEVICE.
- Excessive suture tensioning can cause suture breakage.
- Single patient use only. Do not reclean or resterilize. Adequate cleaning or removal of blood and other foreign materials from used COR-KNOT® products cannot be guaranteed. Validation of resterilization is not established. Failure to eliminate inflammatory or infectious agents may cause patient harm. Product functional performance may be compromised in reprocessed devices or COR-KNOT® FASTENERS.
- Discard any open (unsealed), unused, expired or damaged COR-KNOT® product.
- COR-KNOT® QUICK LOAD® UNIT components and each COR-KNOT MINI® DEVICE, along with packaging, must be inspected, handled and disposed of consistent with standard, accepted medical device disposal procedures.
- Direct contact between sensitive tissue structures (e.g., pulsatile arteries, cardiac valve leaflets, valve chordae, etc.) and foreign materials can lead to tissue injury or damage, such as tissue erosion. Always orient COR-KNOT® FASTENERS and remnant suture tails to avoid direct contact between delicate tissue or prosthetic structures.
- As with any foreign body, prolonged contact of any suture with salt solutions, such as those found in the urinary or biliary tracts, may result in calculus formation.
- While the titanium of the COR-KNOT® FASTENER is physiologically very inert, routine surgical precautions must be employed whenever foreign materials are left in a patient.

PRECAUTIONS

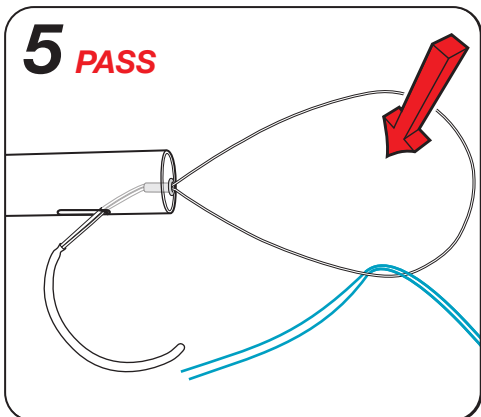
- When handling the COR-KNOT® QUICK LOAD® UNIT care should be taken to avoid damage.
- Do not squeeze the purple lever of COR-KNOT MINI® DEVICE while loading the COR-KNOT® QUICK LOAD® UNIT.
- Irreparable damage to COR-KNOT MINI® DEVICE suture cutting blade will occur if the purple lever is squeezed while the COR-KNOT® QUICK LOAD® UNIT curved handle is in place at the tip of the instrument.
- Ensure that obstructions do not interfere with the firing of COR-KNOT MINI® DEVICE.
- Do not squeeze the purple lever of the loaded COR-KNOT MINI® DEVICE, until the COR-KNOT® FASTENER has been appropriately positioned directly upon the tissue or prosthetic material and the suture accurately tensioned at the targeted site.
- Always squeeze and hold the purple lever and then fully release it before moving the COR-KNOT MINI® DEVICE tip. Failure to appropriately release the purple lever can cause suture breakage. Inspect each COR-KNOT® FASTENER and its suture.
- Do not squeeze the purple lever on the same COR-KNOT® FASTENER more than once.
- Cut suture with scissors if the COR-KNOT MINI® DEVICE fails to trim suture tails or release COR-KNOT® FASTENER.
- Avoid crushing or crimping damage to the COR-KNOT® FASTENER due to inappropriate squeezing of COR-KNOT MINI® DEVICE purple lever, and/or to application of surgical instruments like forceps, needle holders, clamps, etc.
- If COR-KNOT® FASTENER falls out of tip or is not properly loaded, retrieve loose fastener, reload with new fastener and start again.
- If the purple lever of the COR-KNOT MINI® DEVICE does not return completely forward on its own (i.e., without assistance), manually push the lever forward all the way to release the COR-KNOT® FASTENER.
- Check for hemostasis or leakage where appropriate.
- Before endoscopic instruments and accessories from different manufacturers are employed together in a procedure, verify compatibility and ensure that electrical isolation or grounding are not compromised.

ADVERSE REACTIONS

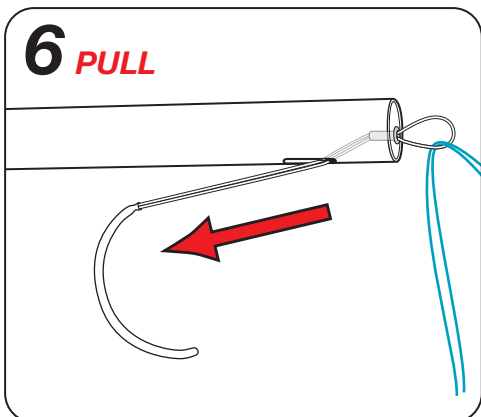
Adverse effects associated with the use of surgical suture and titanium can include, but are not limited to: wound dehiscence, thrombus formation, embolism, calculi formation in urinary and biliary tracts when prolonged contact with salt solutions such as urine and bile occurs, infected wounds, minimal acute inflammatory tissue reaction, and transitory local irritation. Surgical titanium is not absorbed by the body and is generally not associated with inflammatory reactions.

OUTSIDE OF PATIENT

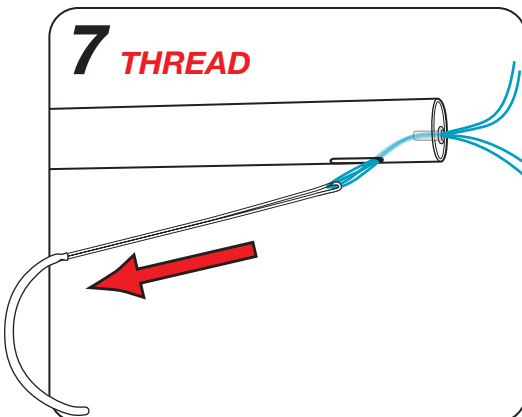
5 PASS



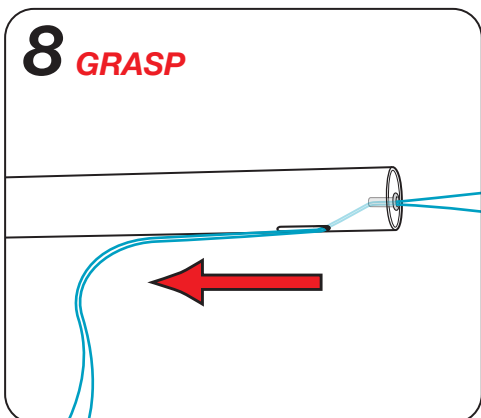
6 PULL



7 THREAD



8 GRASP



THREADING SUTURE THROUGH A LOADED COR-KNOT® FASTENER

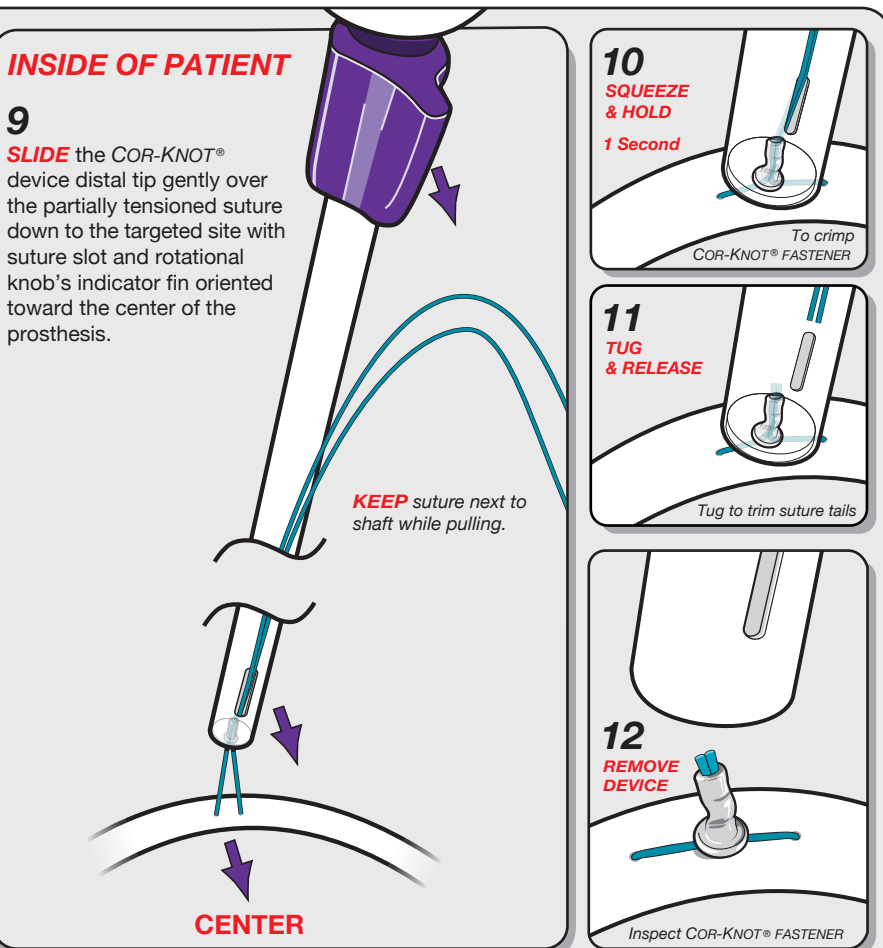
Extracorporeally: surgeons typically use their non-dominant hand to hold the device near the end of its shaft and their dominant hand to complete the suture threading technique.

5. **PASS** both ends of the suture through the open wire snare at the end of the shaft.
6. **PULL** the curved handle with its attached wire snare containing the suture ends towards the purple lever to draw the snared bends in the suture into the **COR-KNOT® FASTENER**.
7. **THREAD** the suture through the **COR-KNOT® FASTENER** and out of the suture slot near the end of the shaft by continuing to pull the curved handle until the wire snare and both ends of the suture exit through the suture slot.
8. **GRASP** both ends of the suture after passing off the curved handle with the wire snare.

INSIDE OF PATIENT

9

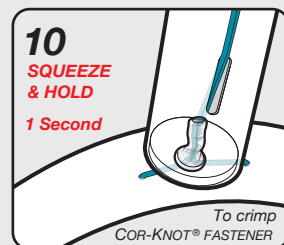
SLIDE the **COR-KNOT®** device distal tip gently over the partially tensioned suture down to the targeted site with suture slot and rotational knob's indicator fin oriented toward the center of the prosthesis.



10

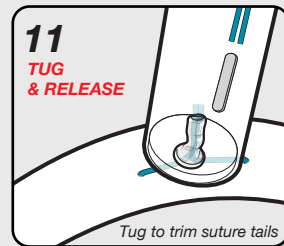
SQUEEZE & HOLD

1 Second



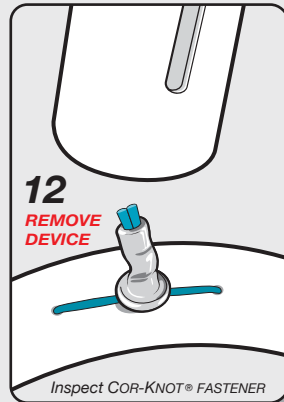
11

TUG & RELEASE



12

REMOVE DEVICE



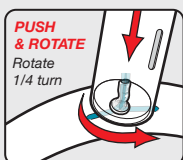
SQUEEZE & HOLD / TUG & RELEASE / REMOVE DEVICE

With the distal tip on the prosthetic, use one hand to apply sufficient suture tension to hold tissue and prosthetic in appropriate apposition, then the other hand to:

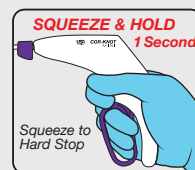
10. **SQUEEZE** the purple lever until it stops, maintain the device tip's position, **HOLD** lever for one second.
11. **TUG** the suture gently to cut free both suture tails and **RELEASE** the purple lever fully to release the crimped **COR-KNOT® FASTENER**.
12. **REMOVE DEVICE** and inspect to ensure **COR-KNOT® FASTENER** and suture tails are oriented away from delicate tissue and prosthetic structures.

PLEASE NOTE

While abruptly squeezing and releasing of the purple lever provides average suture holding forces above EP and USP standards, this recommended **SQUEEZE & HOLD** technique assures optimized suture holding force. Visually inspect each suture and **COR-KNOT® FASTENER**.

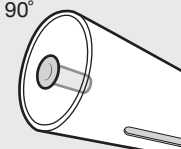


(OPTIONAL) If the crimped **COR-KNOT® FASTENER** does not readily release from the distal tip, ensure purple lever is released, then gently **PUSH** inward and **ROTATE** the handle 90° about the shaft. If still necessary, **ROTATE** the handle back, then turn 90° in the opposite direction. If **COR-KNOT® FASTENER** will still not release, cut suture.



FAILURE TO PROPERLY LOAD SUTURE

NOTE: TO REMOVE A RETAINED **COR-KNOT® FASTENER** IF THE WIRE SNARE IS INADVERTENTLY REMOVED WITHOUT PROPER SUTURE THREADING, SQUEEZE AND RELEASE THE PURPLE LEVER AND THEN TAP THE DISTAL SHAFT ON A TABLE OR USE A SCALPEL TO PRY OUT THE CRIMPED **COR-KNOT® FASTENER**.

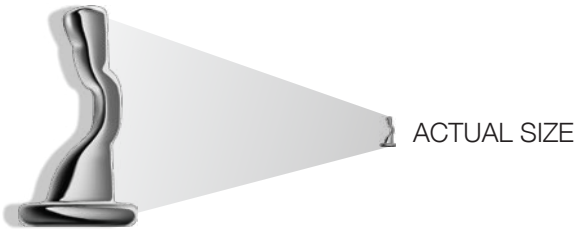


COR-KNOT® QUICK LOAD® UNIT

 READ PRODUCT INSERT THOROUGHLY BEFORE USE

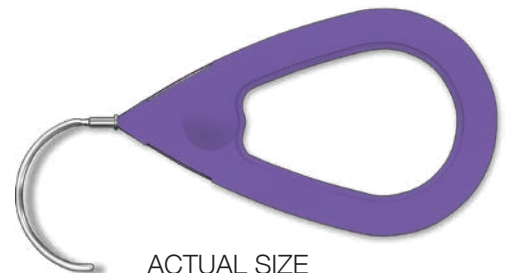
FIG. 3

CRIMPED COR-KNOT® FASTENER



COR-KNOT® QUICK LOAD® UNIT DESCRIPTION

Each COR-KNOT® QUICK LOAD® UNIT provides one sterile COR-KNOT® FASTENER ① held in a customized loading unit consisting of a purple target ②, a wire snare ③, and a blunt curved handle ④. Made from medical grade titanium, a COR-KNOT® FASTENER is a mushroom-shaped hollow sleeve, which is crimped by the COR-KNOT MINI® DEVICE to fasten together segments of suture.



COR-KNOT MINI® MISCELLANEOUS

“ONLY THE SURGEON SQUEEZES THE PURPLE LEVER.”

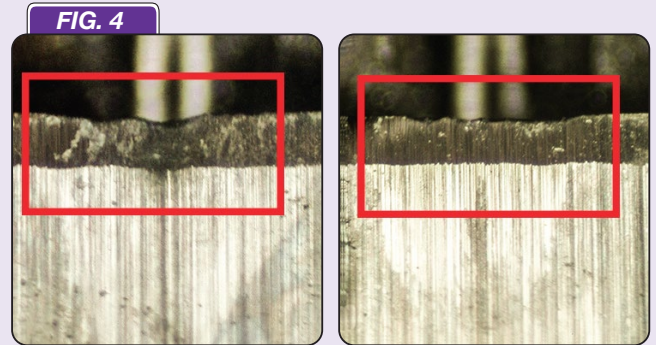
SUTURE CUTTING DIFFICULTY - THE CAUSES OF SUTURE NOT CUTTING EASILY WHEN USING A COR-KNOT MINI® DEVICE CAN INCLUDE:

- USER ERROR INDUCED DAMAGE DULLING THE SUTURE CUTTING BLADE OR
- DEVICE MALFUNCTION, WHICH MAY ALSO REDUCE FASTENER STRENGTH AND SECURITY

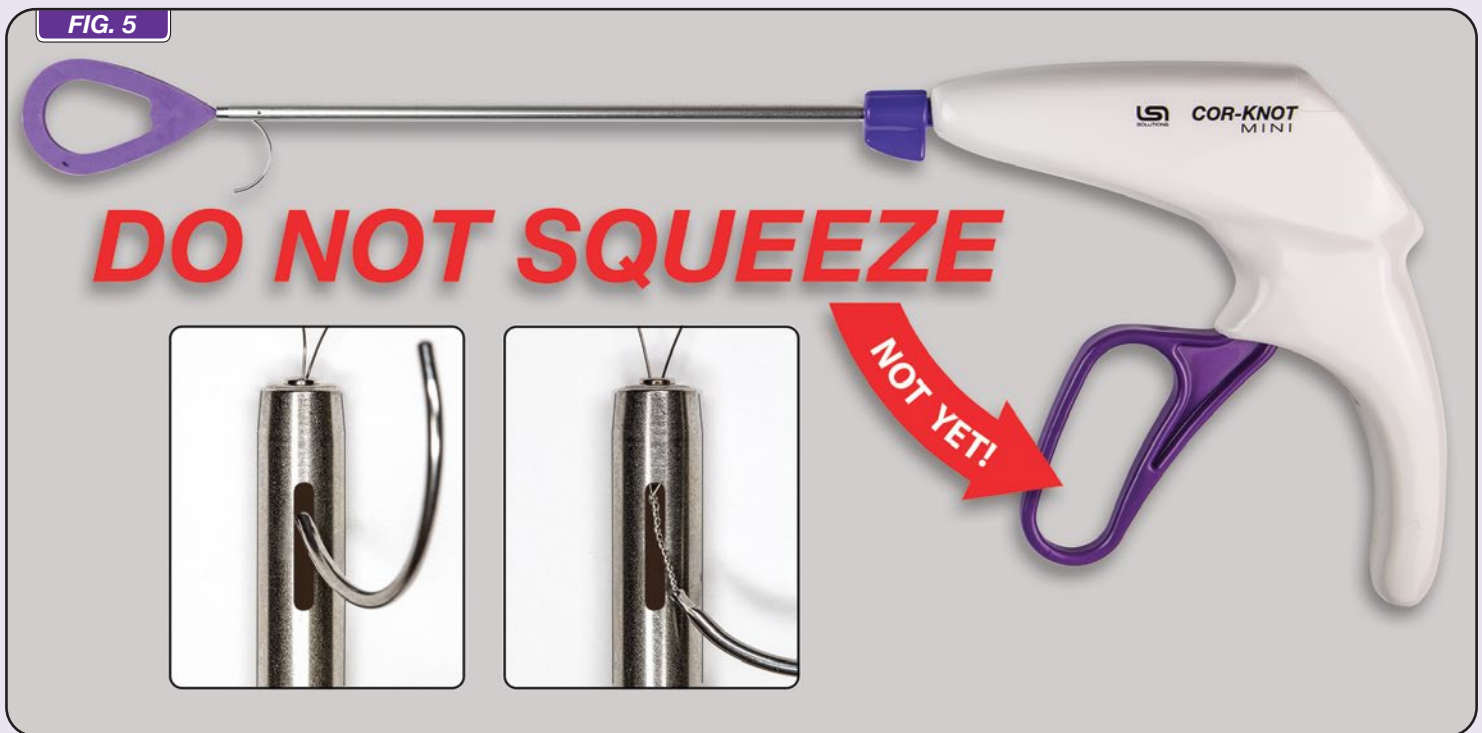
If suture cutting difficulty occurs while using any COR-KNOT MINI® DEVICE, discontinue its intraoperative use and REMOVE DEVICE from the surgical field. Visually INSPECT FASTENER to compare its crimp to other fasteners. Pull or tug on the fastener with a forceps or clamp to TEST FASTENER and suture security.

REMOVE DEVICE-INSPECT FASTENER-TEST FASTENER-RETURN DEVICE

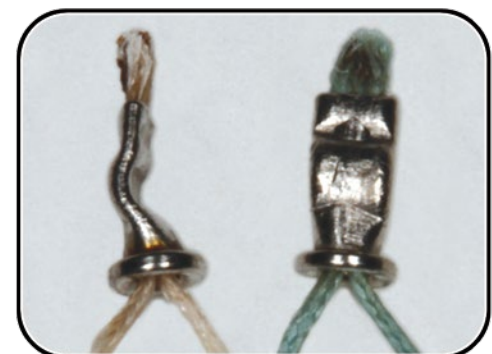
COR-KNOT MINI® DEVICE suture cutting difficulty can be induced by the inadvertent squeezing of the purple lever while the metal loading components are still in the distal device shaft. This user error can lead to irreparable damage to the suture cutting blade by driving the blade into the metal curved handle or metal wire snare.



The photographs above show close-up views of two suture cutting blades from two devices damaged in the same surgical procedure. The subsequent evaluation of the returned devices demonstrated irreparable blade dulling caused by user error. The red rectangles highlight the areas of each blade's previously sharp cutting edge now dulled by the unintended striking of the blade into the metal loading unit components.



HARVESTED AT 18 MONTHS








Courtesy of Scott M. Goldman, M.D.

MRI TESTING

Based on MRI testing information, titanium COR-KNOT® FASTENERS will not present an additional hazard or risk to a patient undergoing an MRI procedure using a scanner operating with a static magnetic field of 3-Tesla or less and under the MRI-related heating conditions (MRI for 15 min. at an MR system reported whole body averaged specific absorption rate, SAR, value of 3-W/kg).

FIG. 6 COR-KNOT MINI® PRODUCT ORDERING

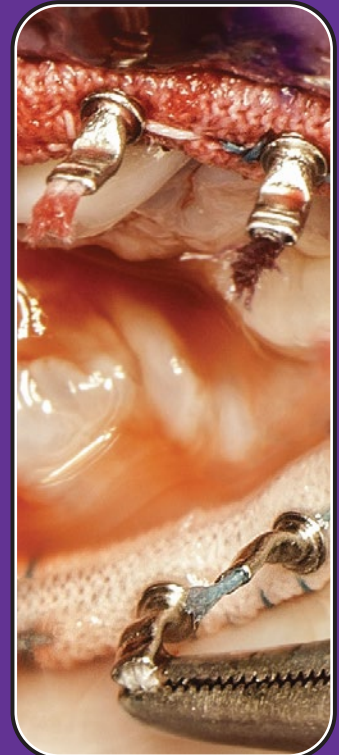
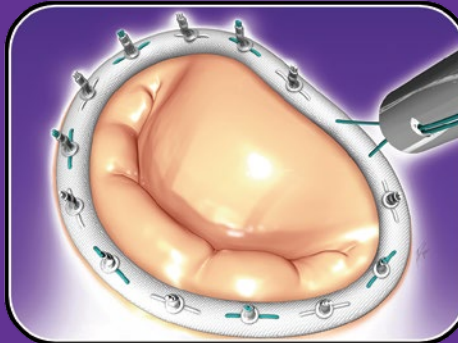
SUPPLIED: STERILE

	REORDER	PRODUCT	DESCRIPTION
 x 6	REF 031400	COR-KNOT MINI® DEVICE KIT	Box of 6 Kits (2 Devices per Kit)
 x 12	REF 030950	COR-KNOT® QUICK LOAD® SINGLES	Box of 12 SINGLES (1 Fastener per Pouch)
 x 12	REF 030902	COR-KNOT® QUICK LOAD® 6-POUCH	Box of 12 Pouches (6 Fasteners per Pouch)
 x 6  x 6	REF 031450	COR-KNOT MINI® COMBO KIT	Box of 6 Kits (2 Devices & 12 Fasteners per Kit)

INTRA OP

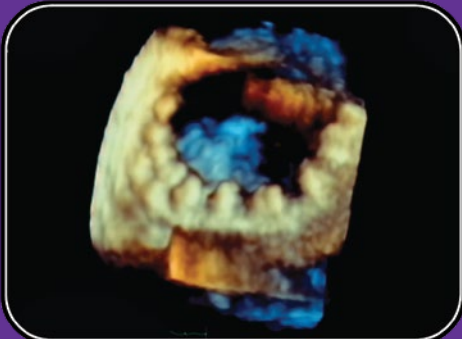


Courtesy of Peter A. Knight, M.D.

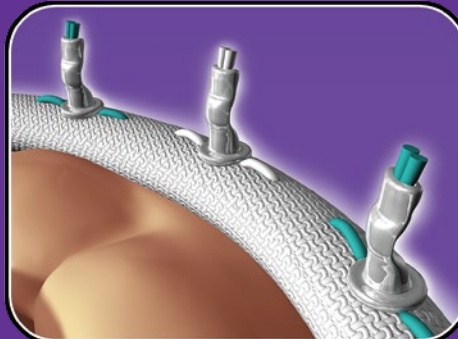


Courtesy of Peter A. Knight, M.D.

3D ECHO



Courtesy of Peter A. Knight, M.D.



LSI SOLUTIONS®

Patents: www.lsisolutions.com/patents

The LSI logo, LSI SOLUTIONS, Cor-Knot, Cor-Knot Mini, Quick Load, and Perfect Performance Policy are trademarks and registered trademarks of LSI Solutions, Inc. Copyright © 2010, LSI SOLUTIONS®. All Rights Reserved.



STERILE EO



Symbol Glossary: www.lsisolutions.com/symbols

EC REP



EMERGO EUROPE
Prinsessegracht 20
2514 AP The Hague
The Netherlands

MADE IN THE USA

This Product Comes
with our LSI SOLUTIONS®
Perfect Performance Policy®
Call us at 866.575.3493 any time.



LSI SOLUTIONS®
7796 Victor-Mendon Road
Victor, New York 14564 U.S.A.
Phone: +1.585.869.6600
Customer Service: +1.866.575.3493
Technical Support: +1.866.428.9092
Fax: +1.585.742.8086
www.lsisolutions.com